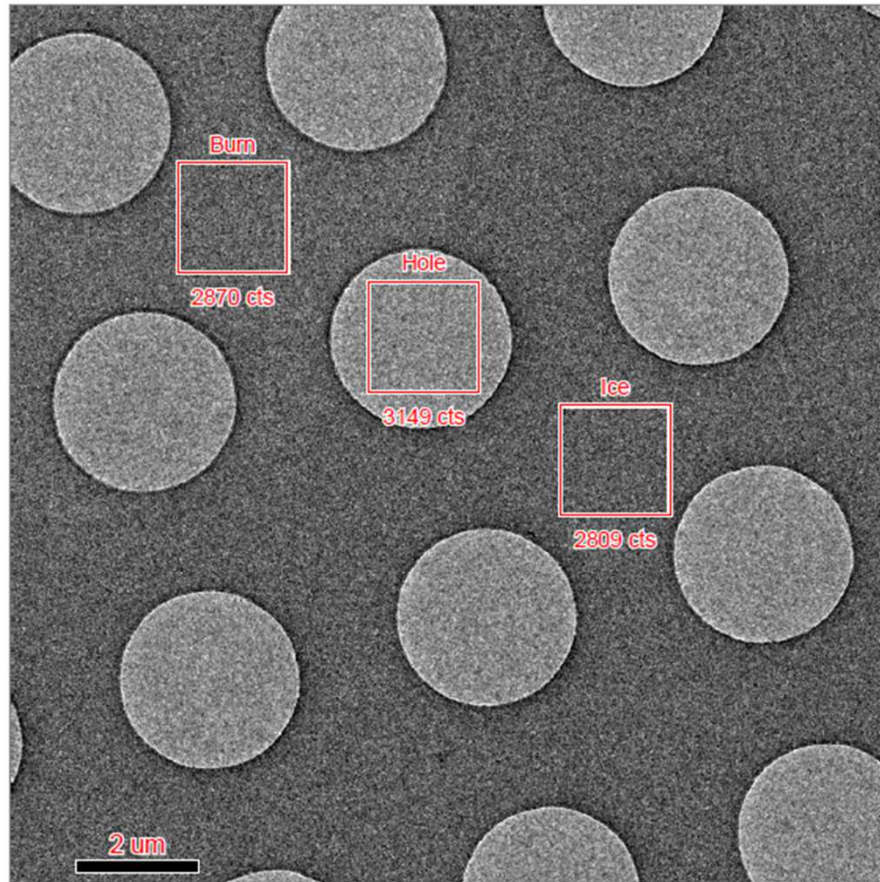


Holder T3

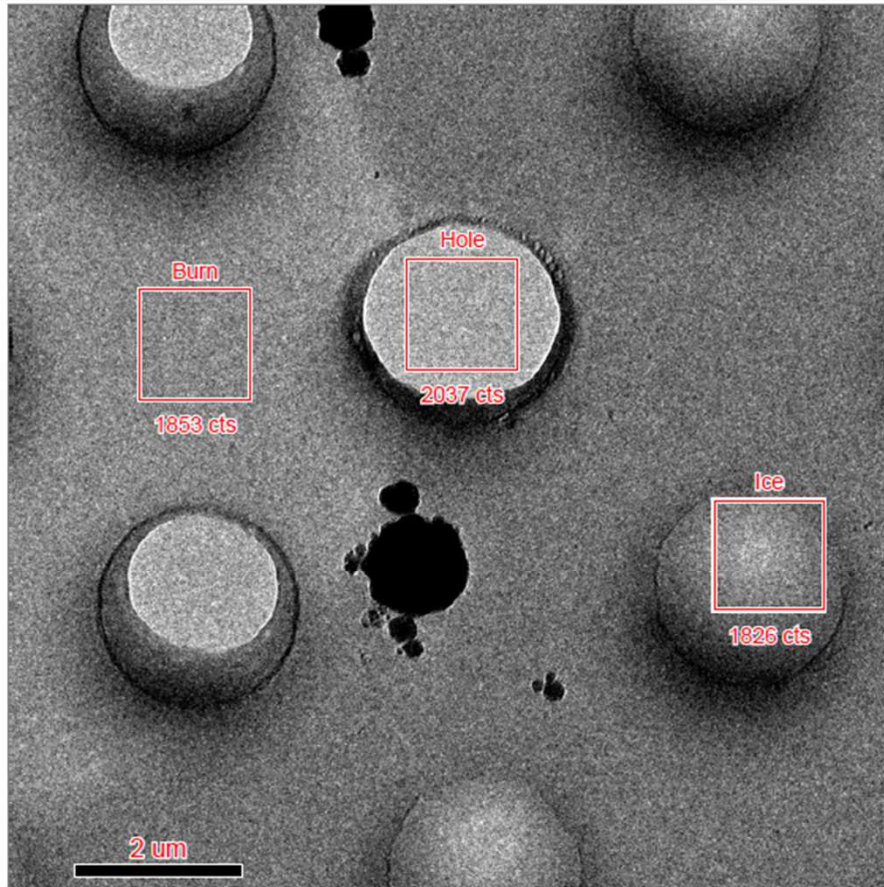
dry grid, Ice growth rate: $\sim 0.23\text{nm/hr}$



Time	Hole	Burn	Ice	Ice thickness (nm)
09:24:19	3208	2907	2870	1.7
10:24:23	3187	2895	2852	2.1
11:24:24	3188	2894	2849	2.2
12:24:27	3180	2893	2847	2.3
13:24:25	3164	2880	2822	2.9
14:24:24	3157	2881	2821	3.1
15:24:24	3149	2870	2809	3.1

Holder T3

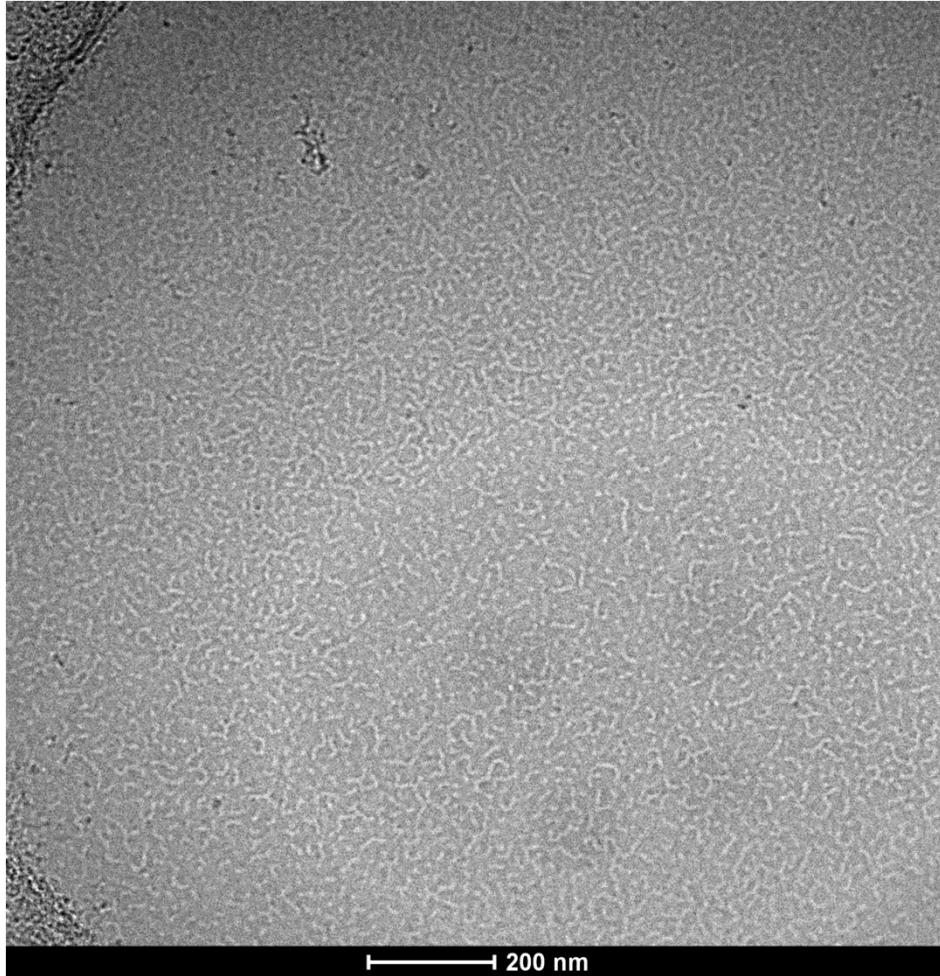
Sample w/ detergent, Ice growth rate: ~ 0.8 nm/hr



Time	Hole	Burn	Ice	Ice thickness (nm)
12:52:20	2061	1810	1857	-2.7
13:52:25	2061	1820	1852	-1.9
14:52:26	2055	1824	1849	-1.5
15:52:26	2041	1830	1836	-0.4
16:52:26	2038	1838	1830	0.5
17:52:26	2032	1846	1830	1.2
18:52:26	2037	1853	1826	2.1

Holder T3

Sample w/ detergent



Leopard ice

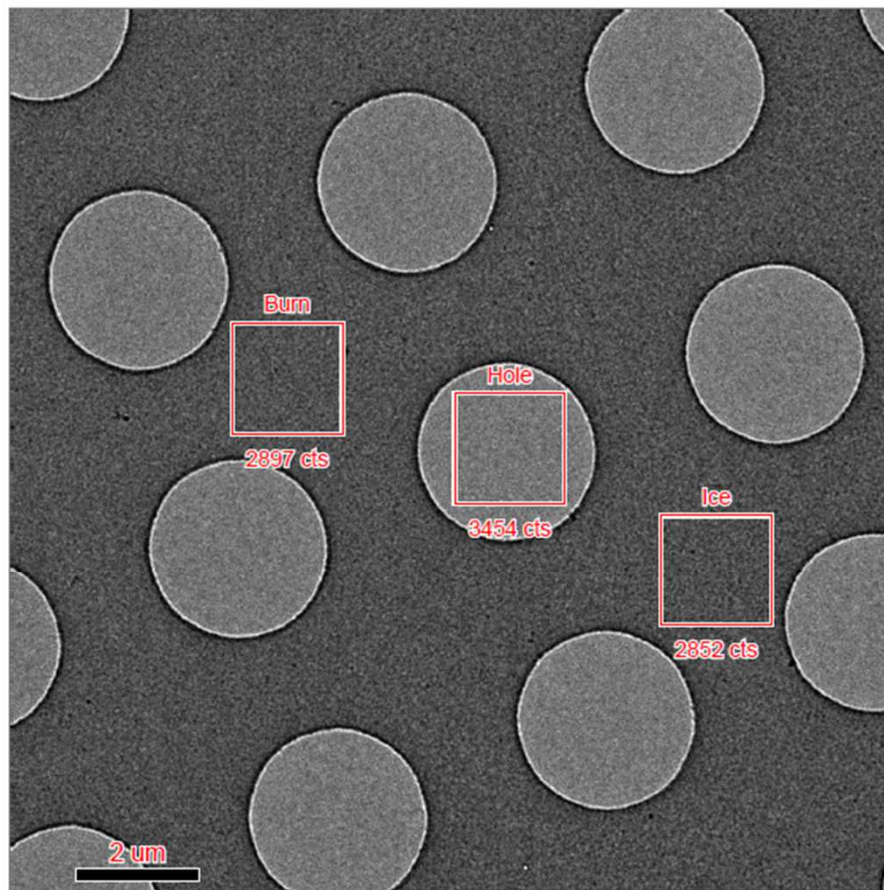
7 hours after loading the grid

Dose: $\sim 20e^{-1}/\text{\AA}^2$

29kx, $-15\mu\text{m}$ defocus

Holder AMI#2

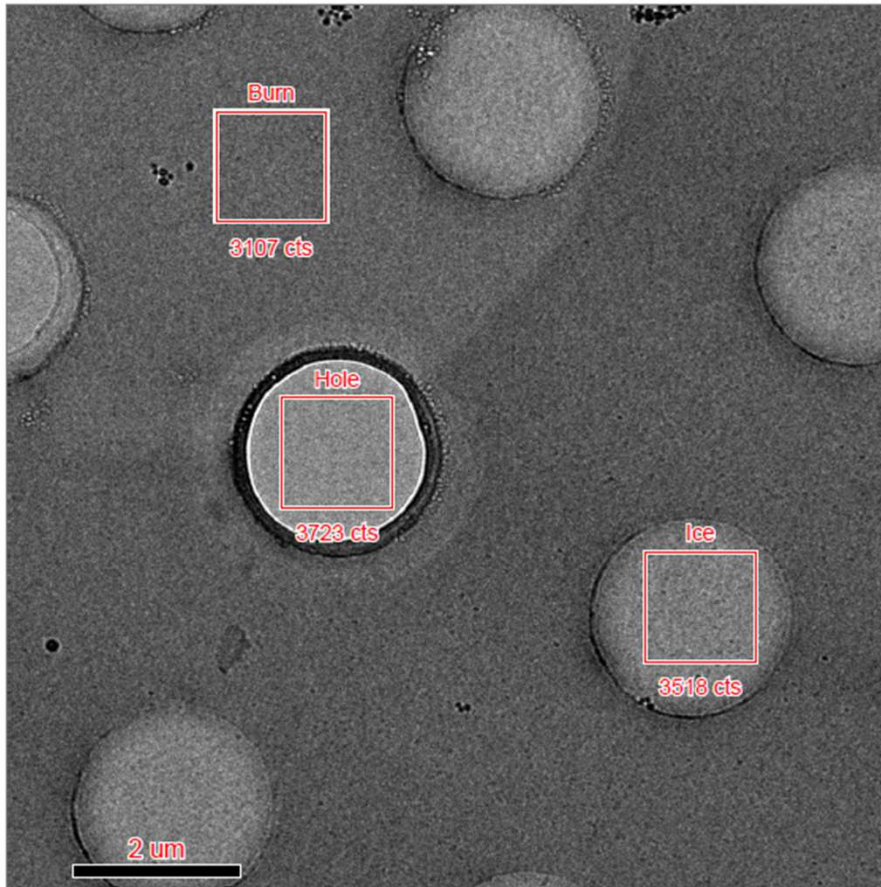
dry grid, Ice growth rate: $\sim 0.11\text{nm/hr}$



Time	Hole	Burn	Ice	Ice thickness (nm)
16:20:48	3552	2967	2948	0.5
17:20:52	3528	2947	2926	0.5
18:20:53	3506	2938	2906	0.9
19:20:53	3491	2936	2901	0.9
20:20:53	3467	2906	2876	0.8
21:20:53	3460	2909	2861	1.3
22:20:53	3454	2897	2852	1.2

Holder AMI#2

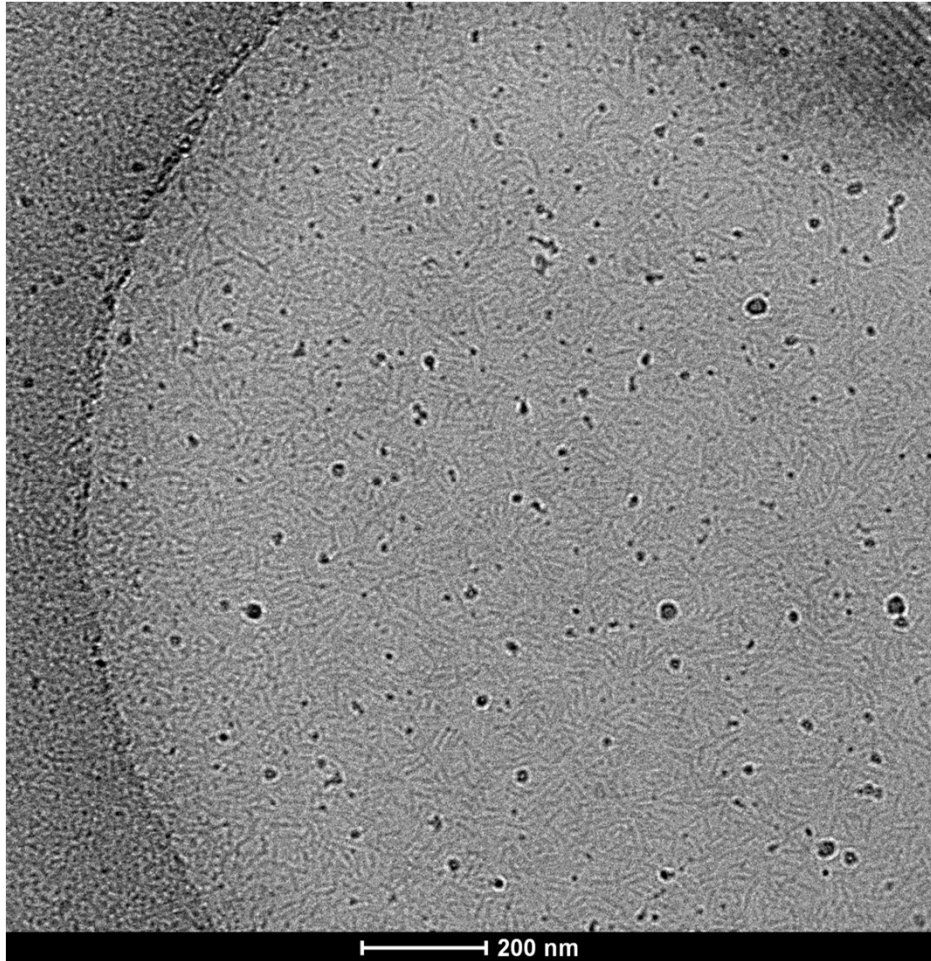
Sample w/o detergent, Ice growth rate: ~ 0.01 nm/hr



Time	Hole	Burn	Ice	Ice thickness (nm)
13:37:11	3801	3038	3554	-9.4
14:37:15	3785	3052	3552	-9.5
15:37:20	3762	3052	3536	-9.5
16:37:16	3751	3064	3535	-9.5
17:37:16	3731	3078	3530	-9.6
18:37:16	3723	3086	3512	-9.3
19:37:16	3723	3107	3518	-9.3

Holder AMI#2

Sample w/o detergent



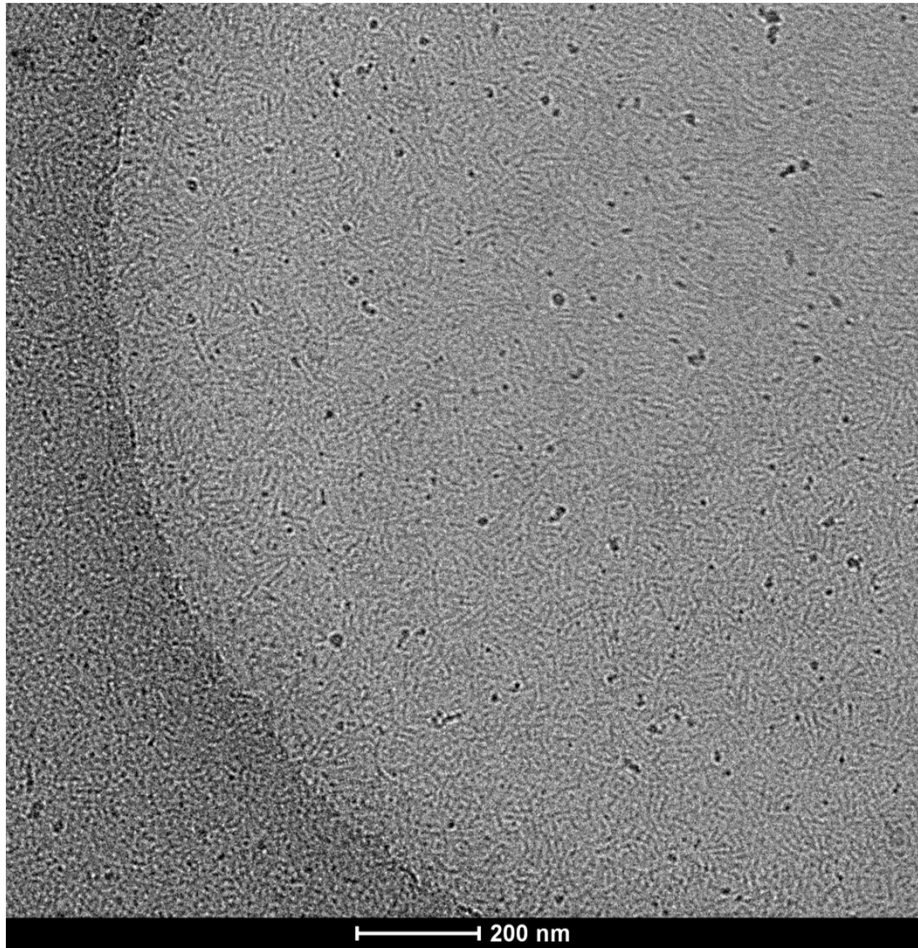
2 hours after loading the grid

Dose: $\sim 20e^{-1}/\text{\AA}^2$

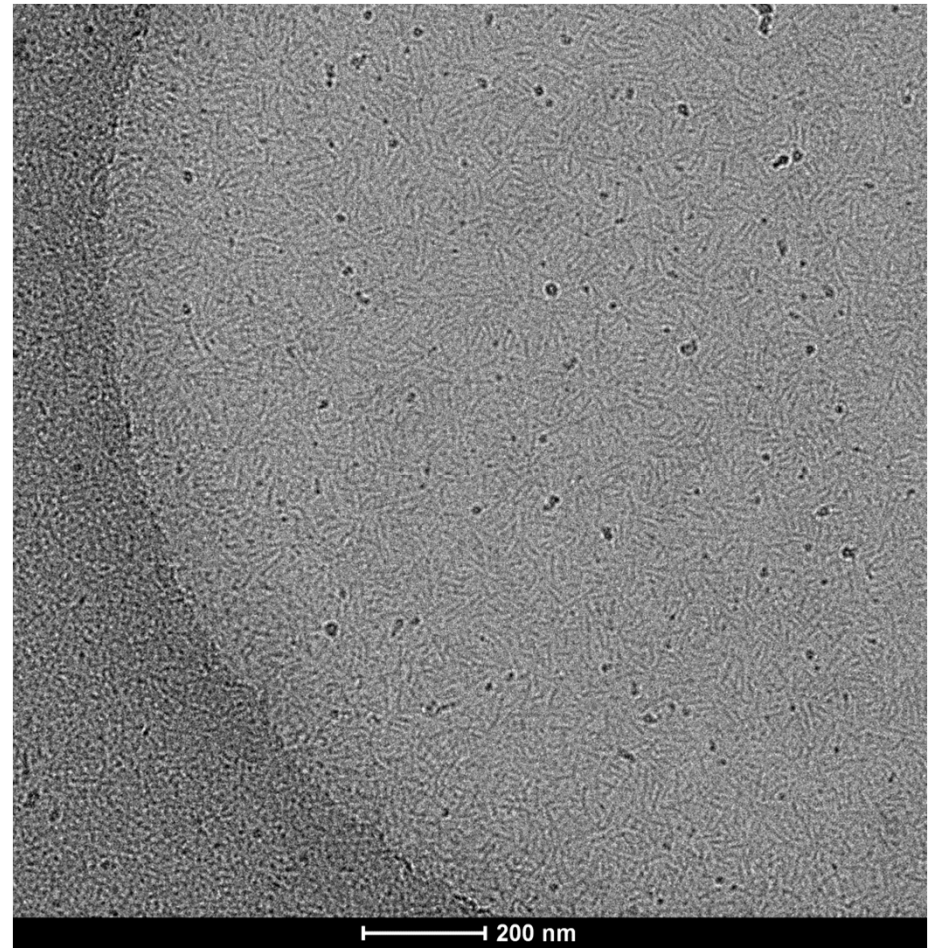
29kx, $-15\mu\text{m}$ defocus

Holder AMI#2

Sample w/o detergent



8 hours after loading the grid
Dose: $\sim 20e^{-1}/\text{\AA}^2$
29kx, $-15\mu\text{m}$ defocus



8 hours after loading the grid
Dose: $\sim 100e^{-1}/\text{\AA}^2$ (5th exposure)
29kx, $-15\mu\text{m}$ defocus